

2021/2022

ANNUAL REPORT



Marion Soil and Water CONSERVATION DISTRICT

*Working with Marion County residents to protect,
conserve, and improve soil and water resources.*



Table of Contents

01

A Season of
Change

02

Meet Our
Team: Board

03

Meet Our
Team: Staff

04

Invasive Plants
Program

05

Native Plants
Program

06

Education in
21-22

07

Plan for Your
Land Report

08

SIA Water
Quality

09

Riparian
Restoration

10

Financial
Report

11

Upcoming
Events

12

Removing
Barriers

13

Landowner
Assistance

14

Discover
Native Plants





We hope you will stop by for a visit. Please call ahead to make sure staff are available to greet you.



503.391.9927

A Season of Change

Janice Calkins, Office & Facility Coordinator

To quote George Bernard Shaw, "Progress is impossible without change." In Fiscal Year 21-22, Marion SWCD changed in many ways, and we think you will agree this change is resulting in progress for our organization and how we serve residents of Marion County.

In July of 2021, our office moved away from Salem to Stayton. Our move came about as a result of many years of Board discussions and deliberations. The Board decided to actively search for a property with an existing office building or land on which a new building could be constructed.

On July 23, 2020, the Board reviewed the title and other legal documents for one very promising office building in Stayton. And one year later to that day, staff and Lyle Moving Company relocated the office to that very same building located at 408 North Third Avenue. This is the first property the Marion SWCD has ever owned. We are proud of this new building, and thank you, tax payers, for making this move possible.

We hope you will stop by for a visit and tour our new building one day. But please call to make sure there are staff available to meet and greet you. Our number remains the same: 503.391.9927. Yes, changes have occurred but one thing remains the same – we are here to serve you, and we encourage you to call upon us for any natural resource concern you may have.

Meet Our Team: Board Members

Our dedicated Directors provide their expertise to the operation of the District.



DARIN OLSON
Chair, Zone 3



ROCHELLE KOCH
Vice Chair, Zone 5



DAVE BUDEAU
Sec./Treasurer, Zone 4



SCOTT WALKER
At Large 2



PEGGY HART
At Large 1



MARK FIELDS
Associate



LELAND HARDY
Associate



ANGELA PLOWHEAD
Associate



BRENDA SANCHEZ
At Large 1



CHONG KEE TAN
Associate



KYLE ROSS
Zone 2



TERRY HSU
At Large 2

CHANGES IN BOARD MEMBERSHIP

In 2022, Angela Plowhead and Peggy Hart joined the Board as Associates, Scott Walker moved from Associate to At Large Director, Brenda Sanchez left the Board to serve as our District Manager, and Chong Kee Tan left the organization. Kyle Ross and Terry Hsu did not run for re-election in 2022. Peggy Hart moved into the At Large 1 Board position in January of 2023. Zones 1 & 2 remain vacant.

Meet Our Team: Staff Members

Our employees are skilled professionals who develop programming to meet your conservation needs.



SARAH HAMILTON
Native & Invasive
Plant Specialist



BECKY PINEDA
Agriculture
Conservation Planner



CHELSEA BLANK
Natural Areas
Conservation Planner



KASSI ROOSTH
Urban Conservation
Planner



DREW DONAHUE
Multi-County
Riparian Technician



HEATH KEIRSTEAD
Communications &
Education Specialist



TOM WILSON
Administrative
Assistant



COMING SOON
Soil & Water
Conservation Planner



BRENDA SANCHEZ
District Manager



LINDA LOVETT
Financial Administrator



SUSAN ORTIZ
Grants Coordinator



JANICE CALKINS
Office & Facility
Coordinator

STAFF TRANSITIONS

In FY 21-22, new hires included Amy Boyd (District Manager), Becky Pineda, Delani Herb (Natural Areas Conservation Planner), Heath Keirstead, and Brenda Sanchez (District Manager). Since then we've said goodbye to Amy Boyd, Mark Akimoff, Delani Herb, and long-time staffer Jenny Meisel. Linda Lovett and Chelsea Blank joined the team in FY 22-23. Kassi Roosth will start in January, 2023.



Knotweed in flower

Invasive Plants Program

Sarah Hamilton, Native & Invasive Plant Specialist

The Marion SWCD's Invasive Plants Program provides education to community members to help them manage invasive plants. The Program has also been involved in several invasive plant survey and treatment projects with partner organizations.

CWMA

Staff at Marion SWCD coordinate the Mid-Willamette Cooperative Weed Management Area (CWMA). The CWMA is a partnership of federal, state, and local government agencies, tribes, individuals, and other groups that manage noxious weeds and invasive plants in the Mid-Willamette Valley. The group provides education about the latest research and new threats facing our communities (i.e. -Weeds of the Month), opportunities for partners to network and learn from each other, and support for on-the-ground control projects.

In May the CWMA hosted their first tour. CWMA members explored parks impacted by the Beachie Creek fire, learned about weeds impacting the burn areas and methods being implemented to prevent their spread.

Knotweed Within the City of Salem

Since 2017 the district has partnered with the City of Salem, Glenn Gibson Watershed Council, and Polk SWCD to control knotweed infestations throughout Salem. The treatments are offered free-of-charge to landowners within the City of Salem who have this destructive weed on their property. Each year the partners work together to treat infestations and locate new ones. This year the partnership treated ~38 properties.

Filterable Invasive Plant Database

Staff created an invasive plant database housed on the new SWCD website. This exciting resource will help residents identify and control invasive plants throughout Marion County and beyond. Users can filter the database by habitat type, soil and moisture requirements, and more.



Filterable Plant Database

www.marionswcd.net/plant-database



Native Plants Program

Sarah Hamilton, Native & Invasive Plant Specialist

Native Plant Sale

2022 was our most successful Native Plant Sale ever!

2022 native plant sale orders were accepted online starting January 5th. Plants were picked up by customers on March 11th and 12th at Bauman's Farm and Garden. We extend our heartfelt thanks to the Bauman family and staff for graciously accommodating our native plant sale, and to the people of Highway Fuel for the donation of bark chips we use to keep bareroot plants moist during the event.

The 2023 Native Plant Sale is now open and accepting orders online until February 5. Explore our inventory of over 100 native flowers, trees, shrubs, grasses, groundcovers, and even vines. The catalog can be filtered by growth form, soil and moisture requirements, light needs, and more to help customers find the right plants for their site conditions! The pick up event will be March 3 and 4 at Bauman's Farm and Garden in Gervais.

This year we're offering native plant-themed talks at Bauman's (and online) on March 3 at 12:00 pm and March 4 at 9:30 and 11:00 am. Customers are encouraged to schedule their pick up time for before or after a talk to make the most of their visit. Talk details can be found on our events calendar at www.marionswcd.net/events/.

Program Changes

With changes in the staff and leadership at the District, changes are coming to the Native Plants and Invasive Plants Programs! The new Native and Invasive Plant Specialist is working with input from board and staff to develop a charter and workplan for the programs. This will help direct the program activities and priorities moving forward.

Staff launched a native plant database on the new SWCD website at www.marionswcd.net/plant-database/. This exciting resource will help residents identify and use native plants, and to appreciate the ecological services they provide in Marion County and beyond.

Pictured Above: Oak woodland with camas in bloom at Bush's Pasture Park in Salem.

221

2022 native plant sale
customers

\$19,835

in 2022 native plant sale
gross sales

5,916

native plants sold in 2022



Salmon Watch at Camp Taloali

Education in 21-22

Heath Keirstead, Communications & Education Specialist

STAFF CHANGES

In the fall of 2021, MSWCD coordinated Salmon Watch field trips after a pause in 2020 due to the pandemic. But the wildfires of 2020 made it too dangerous to hold the trips at the historical location of Packsaddle County Park, so Camp Taloali graciously offered their grounds along the North Santiam for the 2021 trips. Salmon Watch 2021 was the final youth education offering coordinated by Jenny Ammon, who moved on to serve as the City of Keizer Environmental Education Coordinator that November.

On January 10, 2022, Heath Keirstead took on the role of Communications and Education Specialist. Heath comes to the team from Benton SWCD, where she worked for 15 years.

YOUTH EDUCATION

The Education Program offers learning opportunities for youth and adults. Highlights for youth education in 2021-22 include: Salmon Watch field trips, AmeriCorps member training at Camp Taloali, Envirothon test writing and proctoring, coordination of a Native Plants for Pollinators Day for Silvies River Charter School, participation in Salem Outdoor School, Cummings Elementary School Water Festival, attendance at Stayton High School's Summer Kick-off event, facilitation of program bin loans, and CLEAR grants administration.

ADULT EDUCATION

We also offered a robust suite of learning opportunities for adults including: monthly First

Fridays talks, the Plan for Your Land training series, production of eight Conservation Spotlight radio segments, and tabling at the NW Ag Show, the Silver Falls State Park Mother's Day Native Plant Festival, the Oregon Garden Earth Day event, the City of Keizer's Earth Day River Clean Up, and twice at Salem Saturday Market.

COMMUNICATIONS

During 2022, Marion SWCD has been working to build our communications network. From January to June of 2022, our subscribers jumped from 785 to 993, and that number continues to grow. We invite you to [subscribe to our mailing list](#) to receive announcements of upcoming events, plant sales, and other conservation opportunities.

Videos on our [YouTube channel](#) received 912 views, for a total watch time of 134 hours. From July 1, 2021-June 30, 2022, our Facebook reach was 26,734, an 83.7% increase over the previous year, with 1,062 page visits and 102 new likes. Our Instagram reach was 1,499 - up 511.8% from the previous year.

In the spring of 2022, we began the process of redesigning the marionswcd.net website, which launched on January 1, 2023. The website is our premiere instrument for providing educational resources for the community. We hope you will explore the site's features including filterable plant database (natives, invasives, and graminoids) and conservation directory.

11

Number of Program Bins loaned from Feb.-June, 2022

09

Number of CLEAR grants in FY 21-22.

\$13,670

Total CLEAR grant funding distributed in FY 21-22.



Conservation Club

Conservation Club

New for 2023!

In 2023 we are trying a new format. Instead of holding the Plan For Your Land series, we are launching the Conservation Club. Conservation Club includes a variety of learning experiences sprinkled throughout the year to help participants dive deeper on conservation topics. Everyone can “join” the Conservation Club and attend talks, tours, and more. Visit the website at www.marionswcd.net/what-we-offer/conservation-club/.

Plan for Your Land

Sarah Hamilton

Native & Invasive Plant Specialist

On Wednesday evenings in February, Marion SWCD hosted the 4th Annual Plan for Your Land course. The course assists landowner in developing a conservation plan for their property by educating them about conservation and project planning, and by connecting them with partners and community organizations. Course talks were provided as recordings and posted on the website for class attendees to view at their leisure (see www.marionswcd.net/what-we-offer/conservation-club/). The talks, provided by Marion SWCD staff and our partners, and resources remain on the website so anyone can learn without attending the course.

Participants came together online for 1 hour each Wednesday to discuss the talks, ask questions of the speakers, and work on their own plans. We partnered with Clackamas SWCD to open the class to Clackamas County residents.

Participant Breakdown (31 total)

4 partner organizations

- Polk SWCD
- Clackamas SWCD
- North Santiam Watershed Council
- USDA (CREP)

24 individual properties (585 acres)

- 17 in Marion County (460 acres)
- 6 in Clackamas County (95 acres)
- 1 in Linn County (9 acres)
- 3 within the Focus Area: Headwaters of the Pudding River (99 acres)
- 1 in the Strategic Implementation Area: Howell Prairie Creek (5 acres)
- 2 within the Beachie Creek fire area

Conservation Areas Represented

- 16 woodlands
- 15 streams
- 13 pastures
- 13 yards and gardens
- 8 orchards
- 8 wetlands
- 4 row crops



Water Quality in Howell Prairie Creek

Becky Pineda, Agriculture Conservation Planner

2021 marked the beginning of our work with Oregon Department of Agriculture (ODA) in the Strategic Implementation Area (SIA) of Howell Prairie Creek. The area includes the Pudding River tributaries of Walker Ditch, Kraus Creek, and Howell Prairie Creek.

The main ag water quality concerns in Howell Prairie Creek are turbidity (sediment in water) and mercury, both of which can be reduced through these practices: riparian plantings, covering bare ground, irrigation efficiency, and manure management.

Marion SWCD has been working with ODA and Department of Environmental Quality to develop a plan for measuring several water quality parameters in Howell Prairie Creek. We hope to see improvements in these measurements over the course of the SIA program, which ends in 2025.

Through the SIA program, we offer technical advice and financial assistance to land managers with the goal of improving ag water quality. If you are in the Strategic Implementation Area, we'd like to work with you to develop a plan to restore streamside habitat, cover bare ground, irrigate efficiently, and improve manure management practices. Contact Ag Conservation Planner Becky Pineda at becky.pineda@marionswcd.net or call her at 503.949.1518 to get started.

During Fiscal Year 20-21, Marion SWCD provided funding to SIA landowners for five irrigation system upgrades and one cover crop project.

Pictured Above: Irrigation efficiency project placed pipes below ground to minimize losses

05

site visits within the Strategic Implementation Area.

05

irrigation system upgrades within the SIA.

01

property received funding for cover crops.



Riparian Restoration with CREP

Drew Donahue, Multi-County Riparian Technician

The Conservation Reserve Enhancement Program (CREP) has been active in Marion County for more than 20 years, with 14 landowners currently enrolled. CREP is a voluntary program for agricultural landowners that provides financial and technical assistance to restore riparian buffers.

Riparian areas are the interface between land and water, where specific vegetation grows adjacent to waterways. Riparian buffers not only provide critical habitat for wildlife and endangered salmon, but they also cool the water temperatures through shade, provide protection from erosion, and help filter out unwanted sediment, pathogens, and chemicals from entering into the water.

The 2021-22 year has been a tough year for riparian restoration due to wildfires, an ice storm, a heat dome, inflation, and the introduction of the most destructive pest in North America, the Emerald Ash Borer.

Despite these hardships CREP landowners have put in incredible effort; including one landowner who planted 2,050 native riparian plants on 2.49 acres on the Pudding River which is listed impaired for temperature and Guthion- an aquatic life toxin. Landowners are recognizing these hardships as opportunities to improve their communities' waterways and the Marion Soil & Water Conservation District predicts that new CREP enrollments will increase in the coming years.

Pictured Above: Riparian CREP planting of native trees and shrubs along the Pudding River.

35

site visits

2,050

plants in the ground on 4.57 acres along the Pudding River

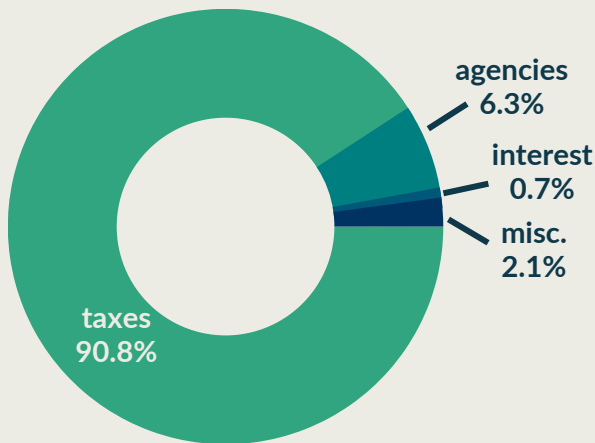
2.49

acres (0.15 stream mi.) re-enrolled along Ryan Creek

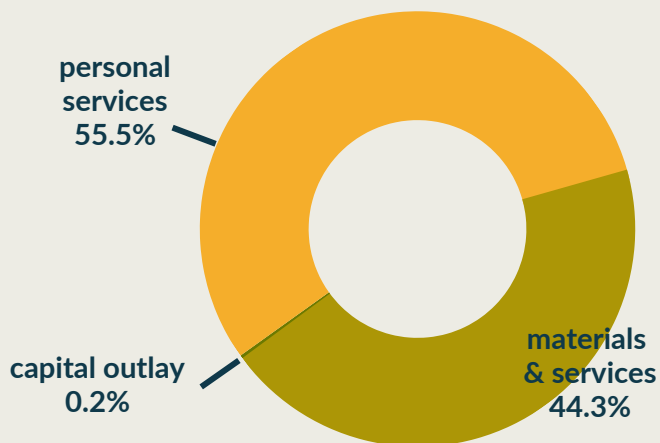
Financial Report

audited numbers from Fiscal Year 2021-2022

General Fund Revenues



General Fund Expenditures



General Fund (\$)	06-30-22	06-30-21
Beginning balance	1,367,453	1,179,260
General Fund Revenues (\$)		
Marion Co. taxes	1,309,032	1,254,244
Income from other agencies	90,946	104,029
Interest income	10,746	10,477
Miscellaneous	30,780	73,716
Total resources	1,441,504	1,442,466
General Fund Expenditures (\$)		
Personal services	663,260	633,279
Materials & services	529,435	663,934
Capital outlay	2,710	9,937
Total requirements	1,195,405	1,307,150
Net transfers in	-	52,877
General Fund Ending Balance	1,613,552	1,367,453

Reserve Funds	06-30-22	06-30-21
Beginning Balance	576,726	1,119,148
Revenues - Interest	1,399	6,218
Expenditures- Capital outlay	33,288	495,763
Net transfers out	-	52,877
Ending Balance	544,837	576,726

The Marion SWCD audit for Fiscal Year 2021-22 was prepared by Jarrard, Seibert, Pollard & Co. The District has two reserve funds: a Multi-Purpose Reserve Fund created in 2012 and a Building Reserve Fund established in 2020-2021, both of which receive interest income. The FY 21-22 ending cash balance for the Multi-Purpose Reserve Fund was \$316,271 and \$228,566 in the Building Reserve Fund.

Upcoming Events

20
23

JAN
01

Native Plant Sale

8 AM Order online 1/1-2/5; schedule your pick-up for March 3 or 4.

NW Ag Show

JAN
18-20

Trade show & talks at OR State Fairgrounds. *free*

9 AM-5 PM

JAN
24

Erosion Control Summit

10 AM-3:45 PM Register by 1/17 www.cityofsalem.net/ECSMS

Marion SWCD Annual Meeting

FEB
01

A presentation of our annual and fiscal report for FY 21-22.

5 PM

FEB
03

First Friday: Native Plantings

12 PM How to incorporate native plants into your landscape. *free*

First Friday: Rain Gardens

MAR
03

Function and design of rain gardens. in-person & online. *free*

12 PM

MAR
04

Conservation Club: Native Oregon Bees

9:30 AM Learn about Oregon's native bees, in-person & online. *free*

Conservation Club: Invite Native Birds

MAR
04

Tips on attracting birds to your yard, in-person & online. *free*

11 AM

VISIT US AT
WWW.MARIONSWCD.NET/EVENTS

Diversity, Equity & Inclusion Team



Diversity

is the recognition of differences that may include race, age, (dis)ability, socioeconomic status, language, gender, religion, sexual orientation, ethnicity, nationality, political perspective, or many other dimensions of diversity.



Equity

is promoting justice, impartiality, and fairness within the procedures, processes, and distribution of resources by institutions. It means that access and opportunities are provided for all to succeed and grow.



Inclusion

is a culture where diverse communities and individuals feel welcome and able to participate in all programs and processes at an organization.

The Diversity, Equity, and Inclusion team is working to address barriers to participation experienced by members of our community. These include physical, financial, linguistic, cultural, educational, emotional, and perceived barriers which prevent community members from fully engaging with the programs and opportunities offered by Marion SWCD. In early 2022, the team began developing a Work Plan and Charter to help direct and prioritize our activities.

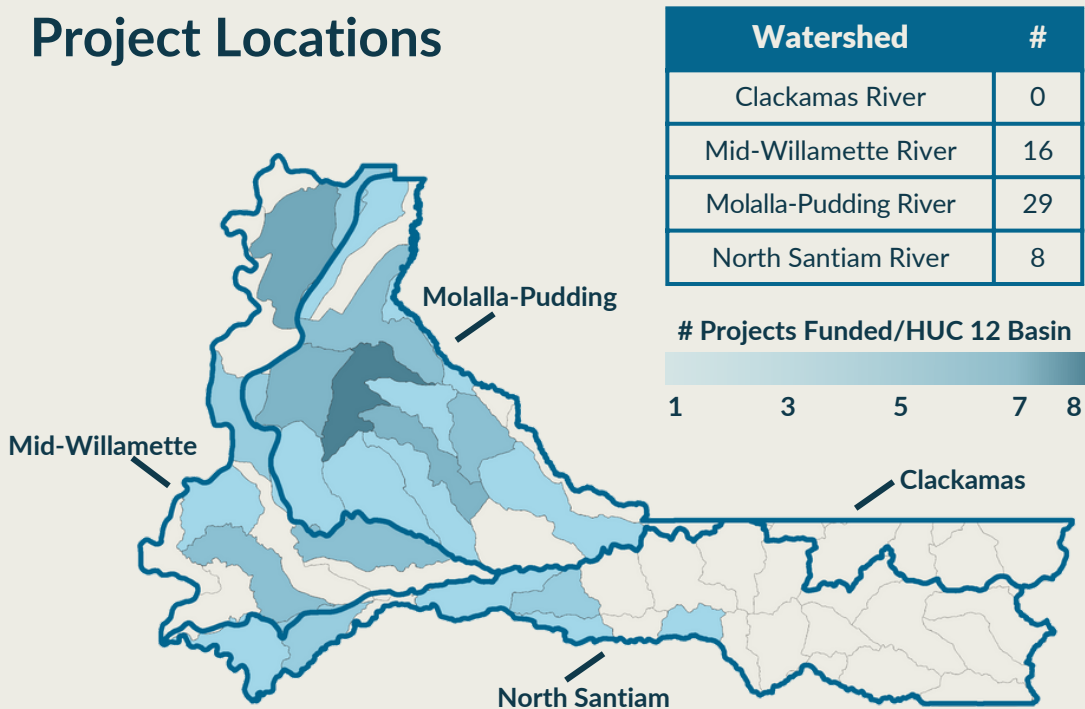
Diversity, Equity, and Inclusivity successes at Marion SWCD in 2022:

- Part-Time SkillsBridge Intern from the Department of Defense
- Creation of the new Urban Conservation Planner position.
- Removal of restrictive language from grant programs and outreach materials .
- Gender-neutral restroom signage.
- District office updates to be implemented include a wheelchair ramp, doorbells, and a bench.
- Established and used a process for requesting ASL interpreters through Oregon Department of Health & Human Services.

Landowner Assistance Program

Marion SWCD reviewed 54 applications in Fiscal Year 2021-2022. Applicant names were not used during the review process. Applications were checked for match, completeness, attachments and eligibility and tracked for watershed, salmonid habitat Agricultural Water Quality Management Program, and groundwater restricted/withdrawn. The Review Team included MSWCD Director Dave Budeau, Associate Director Leland Hardy, and NRCS Soil Conservationist Wallace Jennings. District staff were available to answer Review Team questions. 53 applications were approved for funding to implement 82 conservation practices.

Project Locations



315,732,940

gallons of water estimated to be saved per year from funded irrigation projects

\$362,073

amount of funding approved by Board for 53 applications, with est. \$1,789,397 in-kind.

Fire and Ice

4 projects within the Beachie Creek/ Lionshead Wildfire areas.

9 projects to assist with restoration after the February 2021 Ice Storm.

Marion Soil & Water Conservation District
P.O. Box 537
Stayton, OR 97383



DISCOVER THE WONDERS OF NATIVE PLANTS



Native plants are the perfect choice to support native birds, pollinators, and wildlife; to minimize water use requirements; and to contribute to the creation of habitat connectivity across the landscape. We offer resources to increase appreciation and use of native plants in the Willamette Valley.

Native Plant Sale

Shop online now through February 5, then schedule your order pick up time at Bauman's Farm & Garden on March 3 or 4. While you're there, attend a talk.

Native Plant Talks

We invite you to attend our First Friday and Conservation Club talks and other events to hear from experts on conservation topics, with an emphasis this spring on gardening with natives.

Native Plant Database

Become more familiar with native plants of the Willamette Valley using our filterable database. Visit www.marionswcd.net/resources/native-plants/.